

**S.S.D.P.C.GIRLS' P.G. COLLEGE ROORKEE, HARIDWAR**



**WORKSHOP  
ON  
LABORATORY DIAGNOSTIC  
TECHNIQUES**

**(February 11-12, 2020)**

**Organized By:  
Department Of Microbiology**

**In collaboration with:  
Singh Pathology Lab**











**Disha - Wall Magazine**  
दिशा - भित्ति पत्रिका

**Motto :**  
Gold in Literature ; सहित्य भाव साहित्यो  
हित्यं चित्तं सम्यं भवतीति वा।।



### CORONA VIRUS

Coronavirus is a family of viruses that cause illnesses ranging from the common cold to severe respiratory distress syndrome (SARS).

**Symptoms**

- Fatigue
- Loss of taste and smell
- Shortness of breath
- Cough
- Fever



### SPREAD FACTS NOT FEAR

YOU CAN NOT GET AIDS FROM

- Shaking hands
- Sharing food
- Using public restrooms
- Swimming in pools
- Being in the same room
- Being in the same car
- Being in the same office
- Being in the same school
- Being in the same hospital
- Being in the same airplane
- Being in the same train
- Being in the same bus
- Being in the same taxi
- Being in the same elevator
- Being in the same car
- Being in the same office
- Being in the same school
- Being in the same hospital
- Being in the same airplane
- Being in the same train
- Being in the same bus
- Being in the same taxi
- Being in the same elevator

REMEMBER PEOPLE WITH AIDS NEED OUR CARE

### HEPC TREATMENT

HEPC (Hepatitis E) is a viral infection that affects the liver. It is usually self-limiting and resolves within a few weeks. However, it can be fatal in some cases, particularly in pregnant women and people with pre-existing liver disease.

**Symptoms**

- Fatigue
- Loss of appetite
- Dark urine
- Jaundice (yellowing of the skin and eyes)
- Abdominal pain

**Prevention**

- Drinking clean water
- Eating clean food
- Using clean toilets
- Washing hands with soap and water

### TRANSMISSION

Coronavirus is transmitted from person to person through respiratory droplets. It can also be transmitted through contact with contaminated surfaces.

**Signs of Coronavirus Infection**

- Shortness of breath
- Fatigue
- Loss of taste and smell
- Cough
- Fever
- Headache
- Sore throat
- Diarrhea



# VIRUS

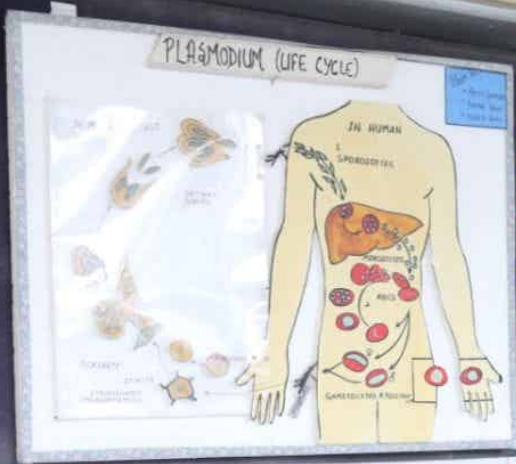
## Corona

Characteristics of Corona virus are as follows: It is a single stranded RNA virus. It is spherical in shape. It is highly contagious. It is highly infectious. It is highly contagious. It is highly infectious. It is highly contagious. It is highly infectious.

### Preventions

Wash hands regularly. Avoid contact with infected persons. Wear a mask. Avoid crowded places. Avoid public transport.

*Shirani Gupta  
BSc II<sup>nd</sup> sem*



### SPREAD FACTS NOT FEARS ABOUT AIDS

YOU CAN NOT GET AIDS FROM

REMEMBER PEOPLE WITH AIDS NEED OUR CARE

### WASH YOUR HANDS

Wash your hands for at least 20 seconds with soap and water. Use hand sanitizer if soap and water are not available. Avoid touching your face. Avoid contact with others. Avoid crowded places. Avoid public transport.

### BREAK THE CHAIN OF INFECTION

**Susceptible host**  
Infectious agent  
Reservoir  
Mode of transmission  
Portals of exit

**BREAK THE CHAIN**

**BREAK THE CHAIN**

**BREAK THE CHAIN**

### TRANSMISSION

**Direct Contact**  
Direct contact involves the transfer of the infectious agent from one person to another through physical contact. This includes touching, kissing, and sexual intercourse.

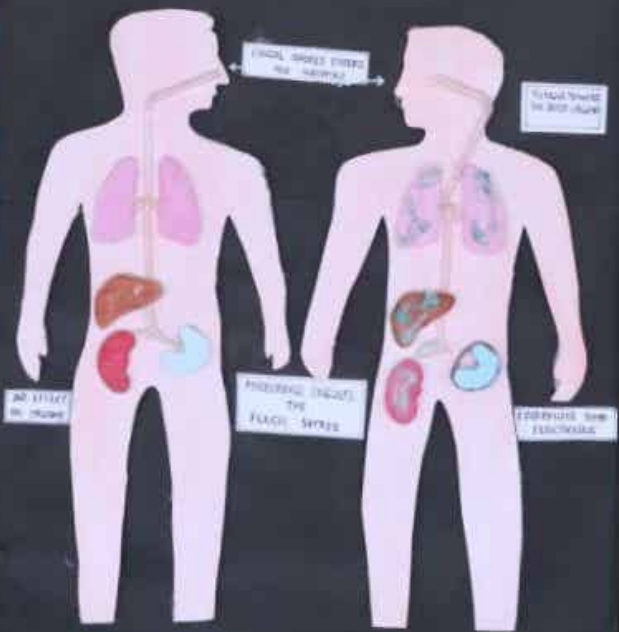
**Indirect Contact**  
Indirect contact involves the transfer of the infectious agent from one person to another through a common object or surface. This includes touching a doorknob, a handrail, or a piece of clothing.

### MEANS OF TRANSMISSION

Direct contact  
Indirect contact  
Airborne  
Waterborne  
Foodborne  
Vector-borne



# FUNGUS AFFECTING IMMUNE SYSTEM



HUMAN WITH HEALTHY IMMUNE SYSTEM

HUMAN WITH UNHEALTHY IMMUNE SYSTEM



*Aspergillus fumigatus* lives under the water.

It is a fungus that grows in the soil, water, and air. It is a common cause of allergic reactions and lung infections.

It is a common cause of allergic reactions and lung infections.

Made by: SWAPNIL YADAV

# HEPATITIS

It is a liver disease.

It is a liver disease.



## TYPES OF HEPATITIS

Type	Transmission	Prevalence	Incubation	Duration
Hepatitis A	Fecal-oral	Common	2-6 weeks	Acute
Hepatitis B	Blood, sexual, vertical	Common	1-6 months	Chronic
Hepatitis C	Blood	Common	2-12 weeks	Chronic
Hepatitis D	Blood, sexual	Rare	2-6 weeks	Chronic
Hepatitis E	Fecal-oral	Common	2-6 weeks	Acute



## REPLICATION



## TRANSMISSION



## DIAGNOSIS

Diagnosis is done through blood tests for liver enzymes and viral markers.

SWAPNIL YADAV





